

DRAWING NUMBER
53/116

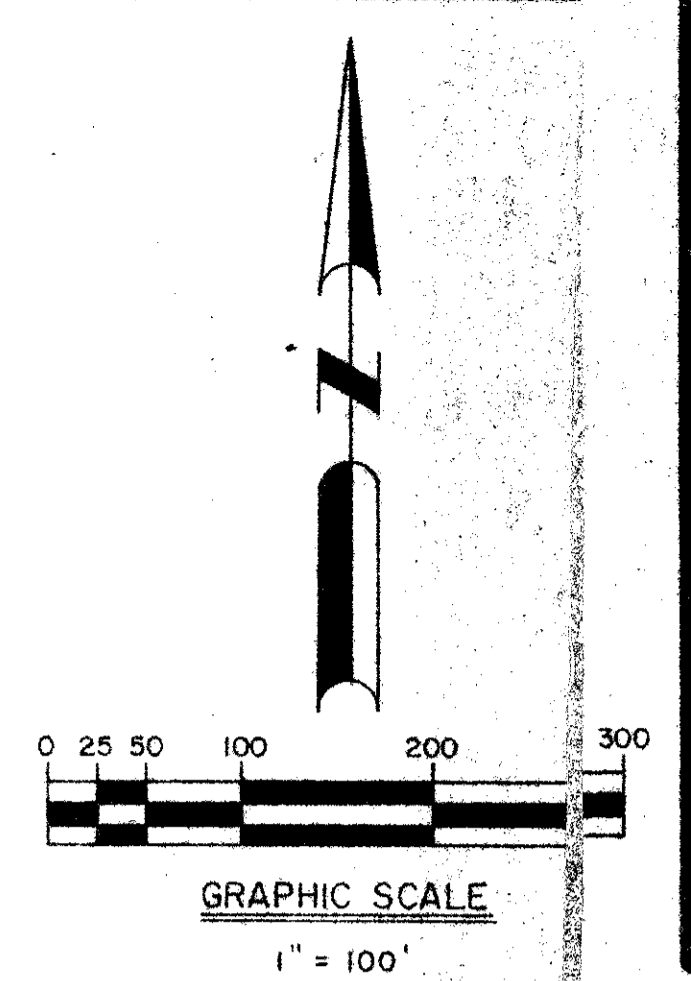
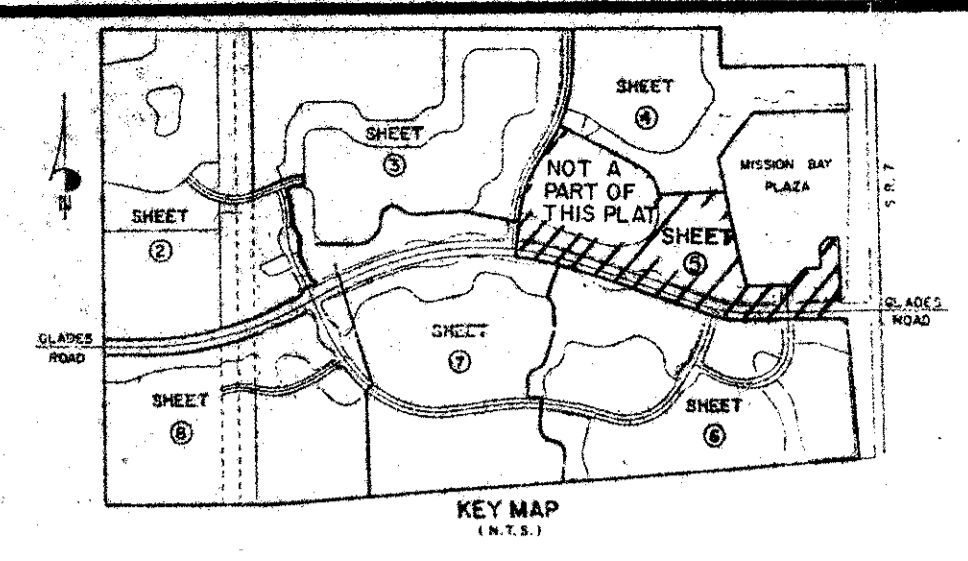
PLAN HOLD CORPORATION • IRVINE, CALIFORNIA
RECORD BY NUMBER 07549

MISSION BAY

A P.U.D.

IN SECTIONS 13 & 14, TOWNSHIP 47 SOUTH, RANGE 41 EAST, PALM BEACH COUNTY, FLORIDA. BEING A PORTION OF THE EAST 1/4 OF SECTION 14 AND A REPLAT OF A PORTION OF TRACTS 7, 8, 9, 10, 23, 24, 33, 34, 40, 41, 49, 50, 51, 55, 56, 57, 63, 64, AND ALL OF TRACTS 6, 11, 12, 21, 22, 25-28, 35-39, 42-48, 52-54 & 58-62 INCLUSIVE OF THE PLAT OF FLORIDA FRUIT LANDS COMPANY'S SUBDIVISION NO. 2 OF SECTION 13-47-41, AS RECORDED IN PLAT BOOK 1, PAGE 102, PALM BEACH COUNTY, FLORIDA.

116



DRAWING NUMBER

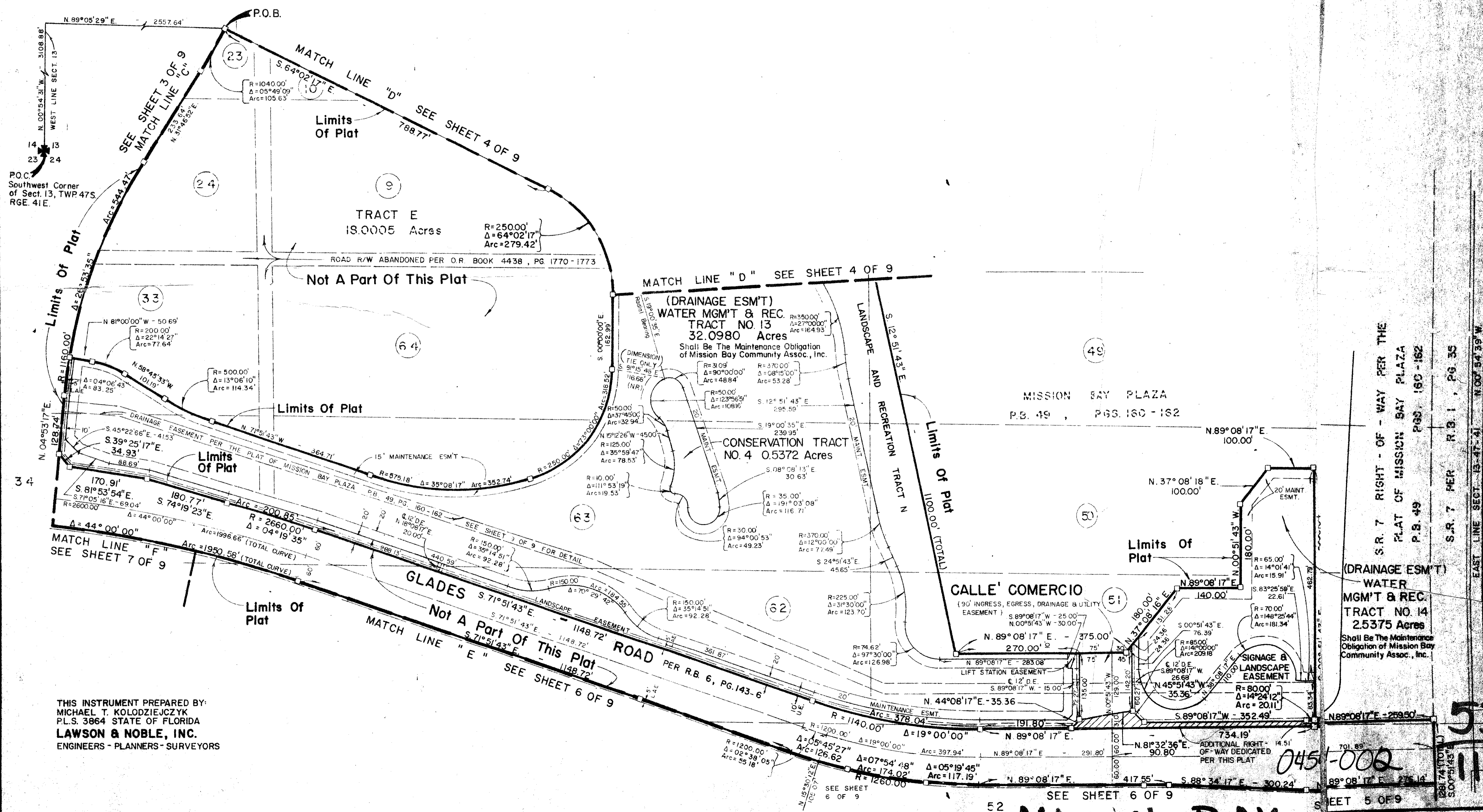
PLAN HOLD CORPORATION • IRVINE, CALIFORNIA
RECORD BY NUMBER 07549

DRAWING NUMBER

PLAN HOLD CORPORATION • IRVINE, CALIFORNIA
RECORD BY NUMBER 07549

DRAWING NUMBER

PLAN HOLD CORPORATION • IRVINE, CALIFORNIA
RECORD BY NUMBER 07549



THIS INSTRUMENT PREPARED BY:
MICHAEL T. KOLODZIEJCZYK
P.L.S. 3864 STATE OF FLORIDA
LAWSON & NOBLE, INC.
ENGINEERS - PLANNERS - SURVEYORS

S.R. 7 RIGHT-OF-WAY PER THE
PLAT OF MISSION BAY PLAZA
P.B. 49 P.GS. 160-162
S.R. 7 PER R.B. 1, PG. 35
EAST LINE SECT. 13-47-41 N.00°54'39"W

(DRAINAGE ESM'T)
WATER
MGM'T & REC.
TRACT NO. 14
2.5375 Acres
Shall Be The Maintenance
Obligation of Mission Bay
Community Assoc., Inc.

MISSION BAY

53
116

0451-000

SHEET 5 OF 9

SEE SHEET 6 OF 9

SEE SHEET 6 OF 9